

LOCATION PLAN

GUE-21-10.94

NEW COMERSTOWN ROAD

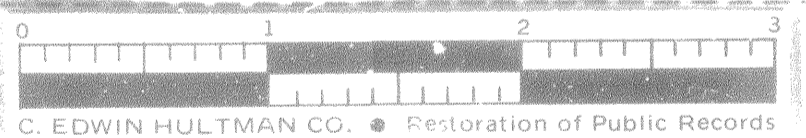
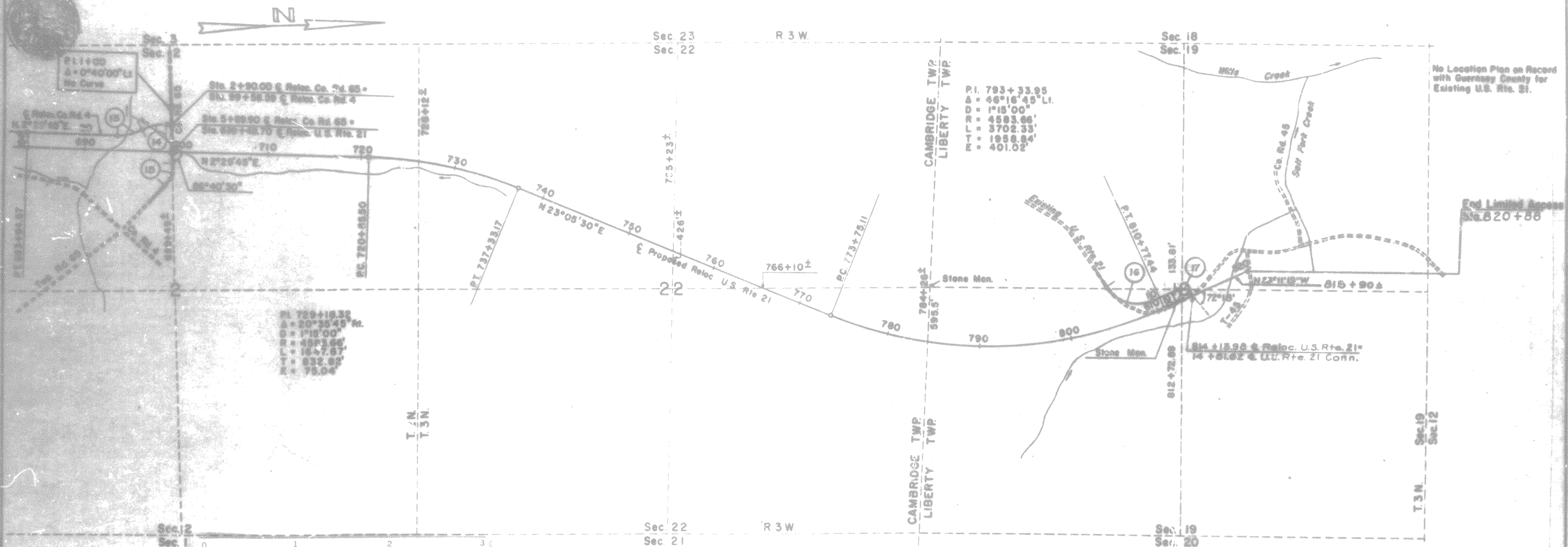
GUERNSEY COUNTY

3501

Received Jan -26-1961 Time 11:00 AM
 Recorded January 26-1961
 Plat Book 11 Page 32
 Signed John W. Camp Registrar, Guernsey Co. Ohio
 No. 3385 Void Jan 26-1961

Note: This instrument prepared by the Ohio Dept. of Hays under the supervision of Harry P. Branno, P.E. No. 15396
 Registered Surveyor No. 2594
 Resident Division Deputy Director
 Date 1-26-61

NOTE: THIS PLAT VOIDS AND SUPERSEDES ALL OF SHEET 2 AND PARTS OF SHEETS 4 AND 5 OF THE LOCATION PLAN FOR GUE-21-10.46 AS RECORDED IN PLAT BOOK 11, PAGES 9, 11 AND 12 OF THE GUERNSEY CO. PLAT RECORDS.



P.I. 84+81.02 $\Delta = 31^{\circ}30'00''$ Lt. $D = 11^{\circ}27'32''$ $R = 300'$ $L = 274.89'$ $T = 141.02'$ $E = 19.51'$ P.C. 83+40.00 P.T. 85+14.89	P.I. 97+55.90 $\Delta = 31^{\circ}30'00''$ Rt. $D = 11^{\circ}27'32''$ $R = 300'$ $L = 274.89'$ $T = 141.02'$ $E = 19.51'$ P.C. 96+14.89 P.T. 98+89.78	P.I. 8+47.59 $\Delta = 42^{\circ}13'45''$ Rt. $D = 16^{\circ}22'12''$ $R = 350'$ $L = 257.96'$ $T = 135.16'$ $E = 25.15'$ P.C. 7+12.43 P.T. 9+70.39	P.I. 7+79.55 $\Delta = 81^{\circ}53'08''$ Lt. $D = 14^{\circ}19'26''$ $R = 400'$ $L = 571.67'$ $T = 347.01'$ $E = 129.55'$ P.C. 4+32.54 P.T. 10+04.21
--	--	---	---

"This improvement has been declared a Limited Access Highway or Freeway by action of The Director of Highways and recorded in Volume 41, page 891, of The Director's Journal in accordance with the provisions of Section 5511.02, Revised Code (1:78-21 General Code) of Ohio, and dated December 5, 1956.

P.I. 13+75.68 $\Delta = 72^{\circ}18'$ $D = 57^{\circ}00'$ $R = 100.52'$ $L = 126.84'$ $T = 73.43'$ $E = 23.97'$ P.C. 13+02.25 P.T. 14+29.09
--

REFERENCE MONUMENTS WILL BE SET ON THE E OF U.S.R. 21 AT THE FOLLOWING STATIONS AFTER CONSTRUCTION.

P.O.T. 555+00	P.O.C. 605+00	P.C. 681+88.87	P.O.T. 718+00	P.O.T. 770+00
P.O.T. 560+00	P.O.C. 610+00	P.O.C. 686+00	P.C. 720+85.50	P.C. 773+75.11
P.O.T. 565+80	P.O.C. 615+80	P.O.C. 670+00	P.O.C. 728+00	P.O.C. 775+00
P.C. 567+81.46	P.T. 620+87.40	P.O.C. 675+00	P.O.C. 730+00	P.O.C. 780+00
P.O.C. 570+00	P.O.T. 625+00	P.O.C. 680+00	P.O.C. 735+00	P.O.C. 785+00
P.O.C. 574+50	P.O.T. 630+00	P.T. 683+94.87	P.T. 737+22.17	P.O.C. 790+00
P.O.C. 580+00	P.O.T. 635+00	P.O.T. 685+00	P.O.T. 740+00	P.O.C. 795+00
P.T. 584+86.88	P.O.T. 640+00	P.O.T. 690+00	P.O.T. 745+00	P.O.C. 800+00
P.O.T. 590+00	P.O.T. 645+00	P.O.T. 695+00	P.O.T. 750+00	P.O.C. 805+00
P.O.T. 595+00	P.O.T. 650+00	P.O.T. 700+00	P.O.T. 755+00	P.T. 810+77.44
P.C. 598+42.73	P.O.T. 655+00	P.O.T. 705+00	P.O.T. 760+00	P.O.T. 815+00
P.O.C. 600+00	P.O.T. 660+00	P.O.T. 710+00	P.O.T. 765+00	P.O.T. 820+00